

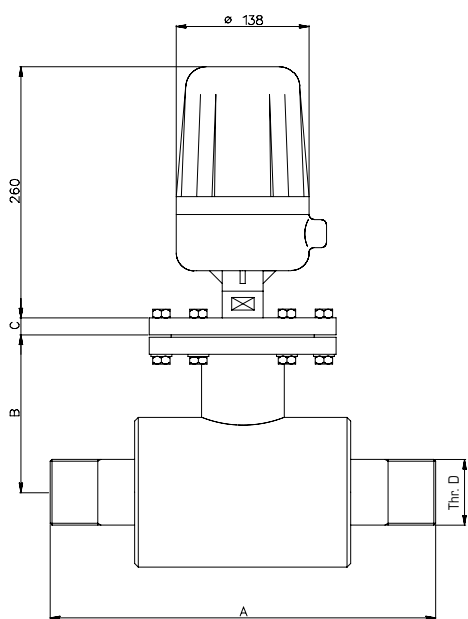


## Flowswitches type IF 70

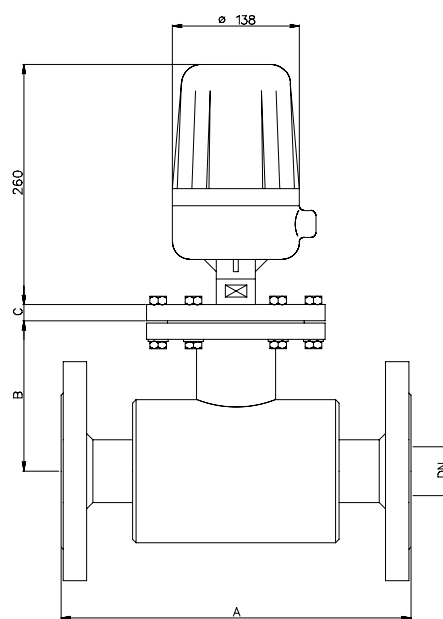
The flowswitches type IF 70 are paddle type flowswitches for mounting on horizontal pipelines with one or two intervention points. They are suitable for all applications where there are working pressures up to 64 bar and temperatures up to 250° C. and their intervention points are adjustable on the whole working range. They can

be constructed with flanged, threaded or welding connections and with body made of different kinds of materials as stated in the above table. The electric part is contained in a weatherproof case made of diecasted aluminium with IP 65 protection (standard type) or in a flameproof case following EN 50.018 (CEI 31.1) - EEx-d IIB

T6 or EEx-d IIC T6 (request type) with threaded electric connection 1/2" UNI 6125 F. The flowswitches type IF 70 are supplied complete with switch groups on which only one SPDT contact is mounted. On request they can be supplied with two SPDT contacts in parallel.



Threaded connections



Flanged connections



BODY	Standard MAX. TEMPERATURE	MAX. TEMPERATURE with cooling fin
Carbon steel	120° C.	200° C.
S/S AISI 304	120° C.	200° C.
S/S AISI 316	120° C.	200° C.

TYPE	A	B	FLANGE DN		C	D	H <sub>2</sub> O m <sup>3</sup> /h max flow
			PN16 - UNI 2223	ANSI B16.5 - 150 LB			
IF 70/50	280	137	50	2"	20	G 2"	20
IF 70/65	300	137	65	2" 1/2	22	G 2" 1/2	40
IF 70/80	330	137	80	3"	24	G 3"	60